

See discussions, stats, and author profiles for this publication at: <https://www.researchgate.net/publication/305394923>

Tracheophyte Phylogeny Poster (TPP) – Vascular Plants: Systematics and Characteristics, 2016

Data · July 2016

DOI: 10.13140/RG.2.1.1947.5443

CITATIONS

0

READS

526

2 authors:



Theodor C. H. Cole

Freie Universität Berlin

169 PUBLICATIONS **28** CITATIONS

[SEE PROFILE](#)



Hartmut H. Hilger

Freie Universität Berlin

272 PUBLICATIONS **1,474** CITATIONS

[SEE PROFILE](#)

Some of the authors of this publication are also working on these related projects:



Boraginales Working Group [View project](#)



Sapindales Phylogeny Posters [View project](#)

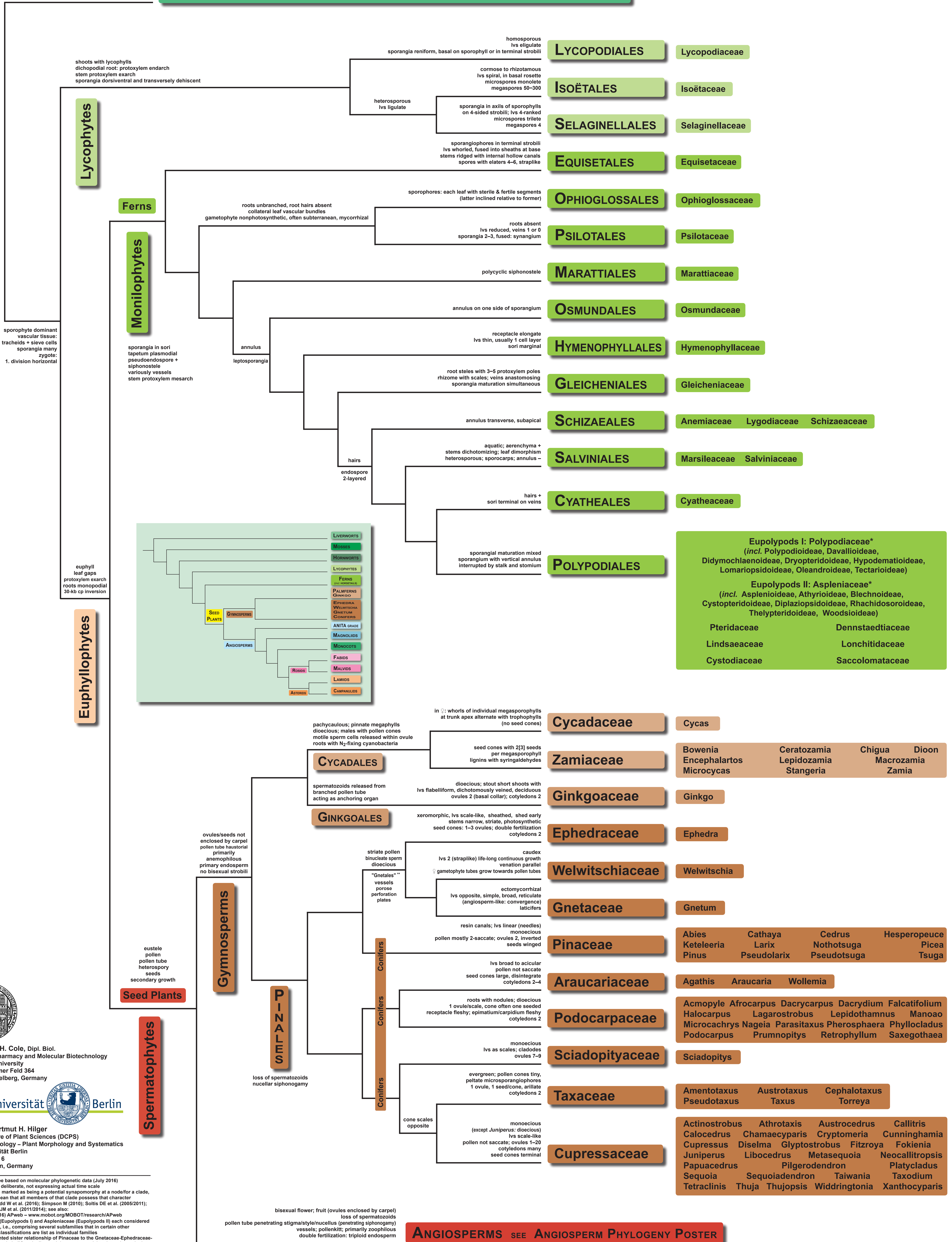
All content following this page was uploaded by [Theodor C. H. Cole](#) on 18 July 2016.

The user has requested enhancement of the downloaded file.

TRACHEOPHYTE PHYLOGENY

Vascular Plants – Systematics and Characteristics

HORNWORTS, MOSSES, LIVERWORTS SEE "BRYOPHYTE" PHYLOGENY POSTER



Theodor C. H. Cole, Dipl. Biol.
Institute of Pharmacy and Molecular Biotechnology
Heidelberg University
Im Neuenheimer Feld 364
D-69120 Heidelberg, Germany

Freie Universität Berlin



Prof. Dr. Hartmut H. Hilger
Dahlem Centre of Plant Sciences (DCPS)
Institute of Biology – Plant Morphology and Systematics
Freie Universität Berlin
Altensteinstr. 6
D-14195 Berlin, Germany

*hypothetical tree based on molecular phylogenetic data (July 2016)
-branch lengths deliberate, not expressing actual time scale
-if a character is marked as being a potential synapomorphy at a node/for a clade, this does not mean that all members of that clade possess that character
-References: Judd W et al. (2016); Simpson M (2010); Soltis DE et al. (2005/2011); Christenhusz MJM et al. (2011/2014); see also: Stevens PF (2016) APweb – www.mobot.org/MOBOT/research/APweb
*Polypodiaceae (Eupolypods I) and Aspleniaceae (Eupolypods II) each considered here sensu lato, i.e., comprising several subfamilies that in certain other contemporary classifications are listed as individual families
**the here presented sister relationship of Pinaceae to the Gnetaceae-Ephedraceae-Welwitschiaceae clade ("Gnepine"), remaining controversial to date, places the latter within Pinaceae and thus Gnetales would not represent a separate order

